



Beverly Rotary Club Sprocket Newsletter

February 7, 2019

POLAR PLUNGE!

Team Beverly ready to dazzle the district with synch team!



Not only will our Rotary team plunge into the frigid waters of Long beach but will perform a synchronized routine that will literally blow up the minds of District leadership. Polar Plunge is only 2 days away please help support our intrepid jumpers who will brave the cold. Our team page can be found here: <https://app.mobilecause.com/vf/polio/team/Beverly> To find out who is registered on your team, click on the link above and select "FUNDRAISERS" Be generous be a good Rotarians and support your team.



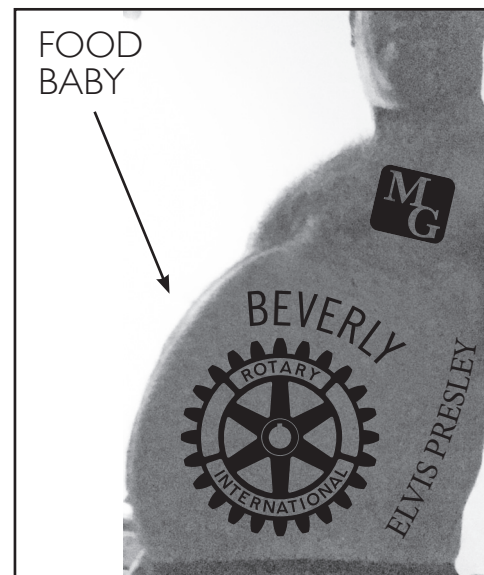
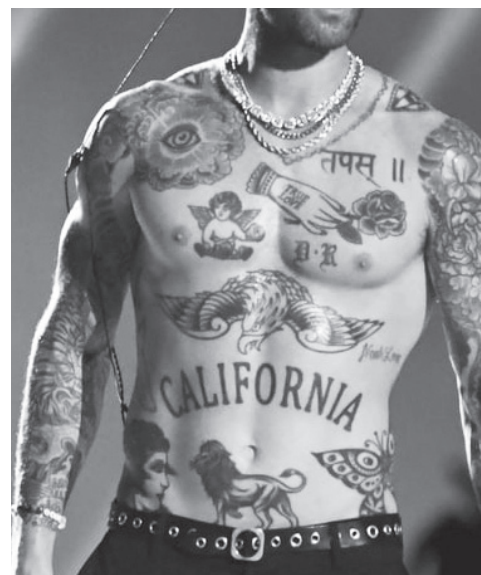
Hi I'm Aku your exchange student from Finland. As you can see by this photo I'm surrounded by American beauty and smarts. I picked wisely when I designated Beverly for my host club. We cut out Dr Jamie trying to pull the skinny arm stunt on us we are wise to photo tricks!

Tennessee, yes I understand that penguins typically jump into frigid waters, but humans have an insatiable desire to do good. Money raised for this event goes to solving Polio which is a nasty disease that effects humans, much like gulu gul is for penguins. I hope you understand this is for a good case and you should lighten up and share the ocean with all living beings. Now onto my next question is your friend Chumly the Walrus a lover? I'm confused at your relationship and his seemingly lack of intelligence makes him possibly prey to a snappy dresser like you. And whats up with the ties?



Finnish word of the day

Polar plunge temperature, kylmä kuin kaikki Ghetto



FOOD BABY

Halftime Show

yes we all know Patriots Won Super Bowl, but the sub story was half-Time show which had everything, singing, dancing and exposed nips that raised the ire of many viewers. The wife of one of our members thought a remarkable similarity between Adam levine and her husband and posted it one facebook. We have visual proof for comparison on above photos. We do see the similarities: shirtless, inked up the w-zoo and both are musicians. After that we may have to drink a bit more beverage to see the commonality. They say love is blind, well here is your proof. Good to see both men have their locations inked on in the event they forgot. Glad we didn't have a kerfluffle like that Miss Janet years ago.

Financial Advice

MONEY MATT-ers

Dear Matt,
I'm appalled that Adam Levine was topless at the Super Bowl half time show. He looks like a billboard for Hepatitis C with all that ink on him. How come no backlash like Janet Jackson received? And btw is Adam from California, or the length of that state name fit nicer in the space allowed? Need to know RIGHT NOW!
- Pablo on Pickett Street

Dear Bob,
yes he's from LA. Can't answer about nips. May all you're putts be for par and your drives true
- Matt



Last Weeks Speaker

Last weeks speaker Tom Jones (cut with the singer cracks!), spoke to us about the Musary which provides (loans) musical instruments to those who need it and can't afford. By doing this they can pass down for those who reached their peak in HS or shortly there after so someone else can use. turns out Saxophones is most highly sought! Must be the lure of the melodic tones. Always looking for unloved instruments much like Misfit island. Clear your home get Tom those instruments. NO PIANOS!

Matthew H. Piaker, JD, LLM, AIF®
Tel: 978-927-3123
Email: mpiaker@cfaemail.com
100 Cummings Center, Ste. 207P
Beverly, MA 01915
www.capitolfinancialadvisors.com

CIFIA
CAPITOL FINANCIAL ADVISORS

Securities and Advisory Services offered through Commonwealth Financial Network, Member FINRA/SIPC. Advisory services offered by Capitol Financial Advisors, a registered investment adviser, are separate and unrelated to Commonwealth.

Business banking right here where you do business.

BEVERLY BANK
YOUR COMMUNITY BANK

MEMBER FDIC MEMBER SIF

montserrat College of Art
where creativity works

visual art & design education
continuing education for all ages
public art galleries
[beverly, ma](http://beverly.ma) | www.montserrat.edu

MG The Mega Group
Commercial Real Estate
BRIAN DAPICE & ASSOCIATES, LLC

BEVERLY 978-922-6400
DANVERS 978-762-9771
www.TheMegaGroup.net

Specializing in Retail Sales & Leasing, Developable Land and Multi-Family Investments

Temkin Financial Group, LLC
"Your family is here to enjoy life... our family is here to plan life"

Alan L. Temkin
Senior Financial Planner

301 Edgewater Place, Suite 200
Wakefield, MA 01880
Main 781-876-4175
Fax 781-876-4199
atemkin@temkinfinancial.com

www.linkedin.com/in/alan-temkin-1150676
www.facebook.com/TemkinFinancialGroup

Securities, investment advisory and financial planning services offered through qualified registered representatives of MMB, Investors Services, LLC. Member SIPC. www.SIPC.org. Temkin Financial Group, LLC is not a subsidiary or affiliate of MMB, Investors Services, LLC, or its affiliated companies, 200 Clarendon Street, 19th & 21st Floors, Boston, MA 02116, 617-585-4500, CFIN201806-214149

MCJ Insurance Agency, Inc.

Michael C. Jones
President

www.mcjinsuranceagency.com

Phone 978-338-4670 409A Cabot Street
Fax 978-522-8388 Beverly, MA 01915
Mobile 978-828-5822 mike@mcjins.com

True to our Communities

We are proud to support the Beverly Rotary Club



STERLING
INSURANCE AGENCY, INC.

Established in 1929 & Still Growing!

Auto • Home • Business • Health • Life

Richard F. Mooney Jr.
president

306 Cabot Street, Beverly, MA
(978) 922-6600

Desjardins
JEWELERS

978-922-2149

Commodore Plaza,
47 Enon Street
Beverly, MA 01915-3601

The leading provider of custom-designed workforce training programs.

NORTH SHORE COMMUNITY COLLEGE
Corporate Training SOLUTIONS
Train your people. Transform your company.

Dianne Palter Gill, Ed.D.
978-236-1225
dpalterg@northshore.edu
corporate.northshore.edu

Last week at the Beverly Rotary Club...

Meeting Called to Order:
12:15 p.m. Pres. Matthew Piaker
Pledge of Allegiance:
Mark Brislin
Song:
Dianne and Freddy

"I Want to Hold Your Hand" by the Beatles
Invocation:
Jack Good

Sergeant at Arms:
Diane Howard

Visiting Rotarians:
Kang Yu, Assist. Gov., Saugus Club

Guests/Hosts:
Gloria "Bon-lee-on"/Larry Herman
Aku Kavka/Larry Herman
Brian Dolan/Matthew Piaker

Quote:
"How wonderful it is that nobody need wait a single moment before starting to improve the world."
-Anne Frank

Announcements:
1. On Saturday, March 16, our Rotary Club, in collaboration with the Cabot, is presenting "An Evening with the Fab Four," America's premier tribute band. The club has created a promotional video that has been posted on YouTube: <https://www.youtube.com/watch?v=5cWlUm4C0&feature=youtu.be>

To obtain the best seats, purchase

your tickets through Beverly Rotary at www.RotaryFabFour.com. Rotary ticket holders will receive access to a 5:30 p.m. early admission reception with food and prizes. Rotary members are also encouraged to purchase advertising space in the show's program, which counts towards the \$200 cash contribution required from Rotary members regarding the event.

2. This year's Polar Plunge will be held on Saturday, February 9 at 11 a.m. at Long Beach in Gloucester. Shuttle busses to the beach will be available from the parking area. Additional details, including how to donate, are available at <https://rotary7930.org/stories/it-s-almost-time-to-plunge-1/>.

3. The Rotary Club of Peabody will be holding its 15th Annual Taste of the North Shore fundraiser on Tuesday, March 16 from 6 to 9 p.m. at the Doubletree Hilton Hotel in Danvers. Twenty-five area restaurants will be serving main courses, deserts, and spirits. More details are available at <https://patch.com/Massachusetts/peabody/announcements/a/70063/rotary-club-of-peabody-15th-annual-taste-of-the-north-shore>.

4. Next week's speaker is Justin Hyland, a speaker and author on the topic of recovery.

Weekly Raffle Winner:

...Thursday, Jan. 31, 2019

Elizabeth MacComber won but drew the 2 of clubs.

Birthdays:

Marshall Handy (Feb. 1)
Mike Jones (Feb. 2)
Lori Cianciulli (Feb. 6)

Speaker:

Tom Jones, The Musary

themusary.org; tom@themusary.org

The Musary is a "music lending library" that loans musical instruments to youth and adults free of charge. Located in Hamilton, the organization is a non-profit that was founded in 2008 and has loaned instruments to over 15,000 youth and adults, including 1,000 young people in Beverly. The organization currently has 703 musical instruments on loan. The "check out" period for instruments is 90 days with the opportunity for indefinite renewal. For those that are interested in donating a musical instrument, please bring them to the February 7 meeting.

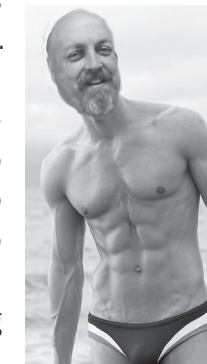
Meeting Adjourned:
1:26
Submitted by Brandon Campbell

Gong Hey Fat Choi for all you Chinese new Year lovers say hi to Meng



Polar Plunge Equal Time

It has been suggested to our staff that Rotarians demand equal time for our Polar Plungers. Last weeks photo of Dave Olson has gone viral so we thought it only makes sense to show you what Sarah, a 3 time plunger brings to waters edge. Like Dave, Sarah has been training extensively to show that our club is committed to braving the cold waters of Long Beach. Our team page can be found here: <https://app.mobilecause.com/vf/polio/team/Beverly> To find out who is registered on your team, click on the link above and select "FUNDRAISERS"



Please be as generous as you can, we need to beat the other clubs in our district and since Bill Gates is matching you can stick it to him as well. Go plungers, go team Beverly, which includes Aku and Sean.

Eagle Strategies LLC **NEW YORK LIFE**

Edward F. Cahill, J.D., CFP®, CLU®, ChFC®
Financial Adviser
(978) 927-9352 • 306 Cabot Street, Beverly, MA 01915
ecahill@ft.newyorklife.com • www.edwardfcahill.com

Agent, New York Life Insurance Company.
Registered Representative, offering securities through NYLIFE Securities LLC,
Member FINRA/SIPC, a Licensed Insurance Agency
201 Jones Road, Fifth Floor, Waltham, MA 02451 • Tel: 781-647-4100
Eagle Strategies and NYLIFE Securities are New York Life Companies

PROMETHEUS TUTORS

KNOWLEDGE • SKILLS • REASONING

(978) 922-5540
www.prometheustutors.com

CCI Reprographics

A Full Service Copy Center
AV Rentals & Services
Serving Beverly Since 1979
Alex Ushakoff III - owner
4th generation Rotarian
Centennial Rotary President 2004-2005
Two convenient Beverly offices

110 Cabot Street 107Q Cummings Ctr
978-922-3773 978-921-1166

SHUKA Associates Inc.

Real Estate Appraisal, Appraisal Review & Consulting

John A. Shuka, MAI, SRA, AI-GRS
8 Enon Street, Suite 1B
Beverly, MA 01915
978-921-1700
www.shuka-associates.com

Wayside
rentals & leasing

OFFICE & STORAGE TRAILERS
STORAGE CONTAINERS
Moving • Leasing • Rentals • Sales
800.786.3313
www.waysidetrailers.com